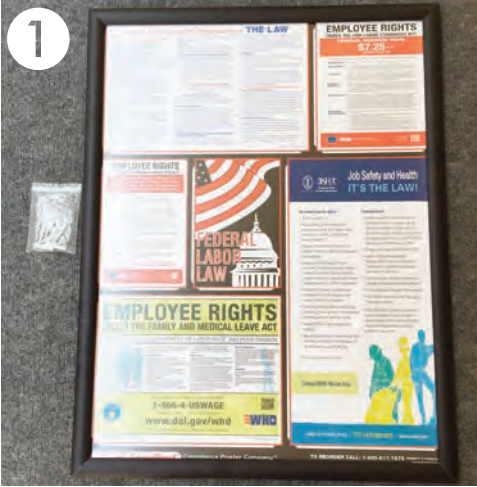
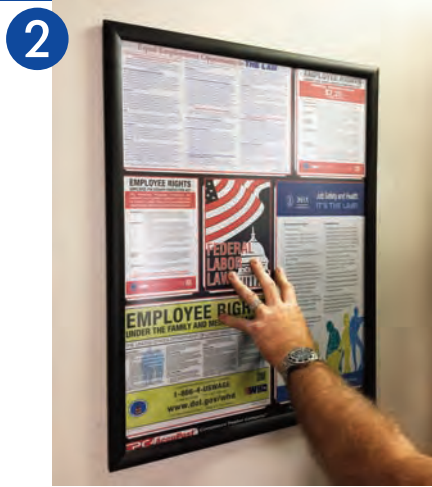


# SNAP FRAME INSTRUCTIONS OPTION A



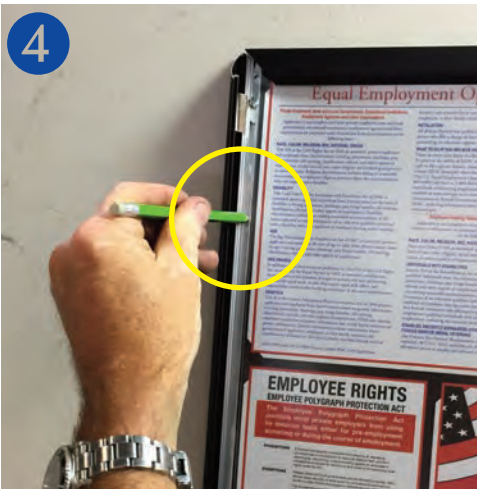
1 Open the box and take out your framed poster with the provided contents: plastic bag with wall screws and anchors. (Wire not included)



2 Locate a blank wall area for your framed poster to hang.



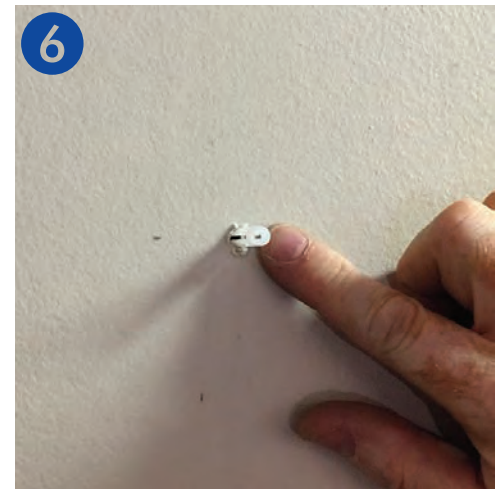
3 Open the left and right sides of the frame and locate the frame's pre-drilled holes.



4 With a pencil, mark the holes on both the left and right sides of the frame.



5 With a screwdriver (Phillips/X), drive the screwdriver into the wall where you marked the left and right holes.



6 Push the white plastic wall anchor into the wall.



7 Take the provided screw and feed it through the frame to match up to the wall anchor. Using your screwdriver, drive the screw into the wall.



8 Do this for the right side also. Then snap the frame closed on both sides.



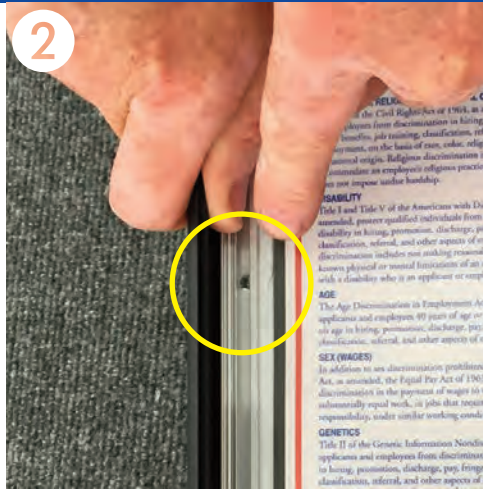
9 Your framed poster should be mounted to the wall as above.



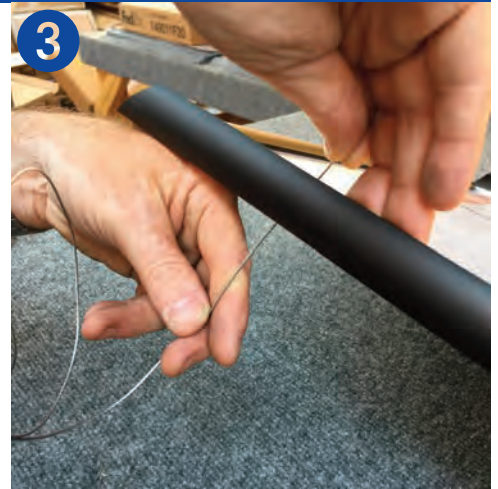
# SNAP FRAME INSTRUCTIONS OPTION B



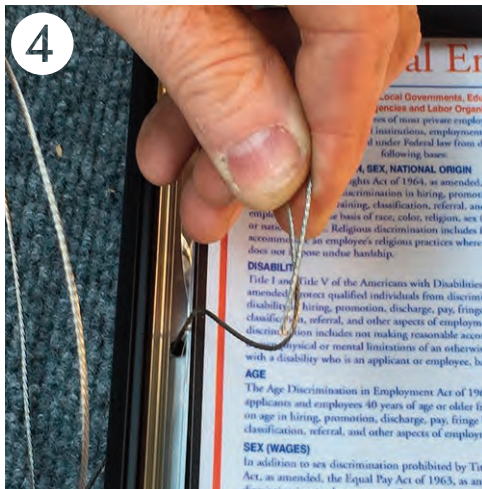
1 Open the box and take out your framed poster with the provided contents: plastic bag with wall screws and anchors. (Wire not included)



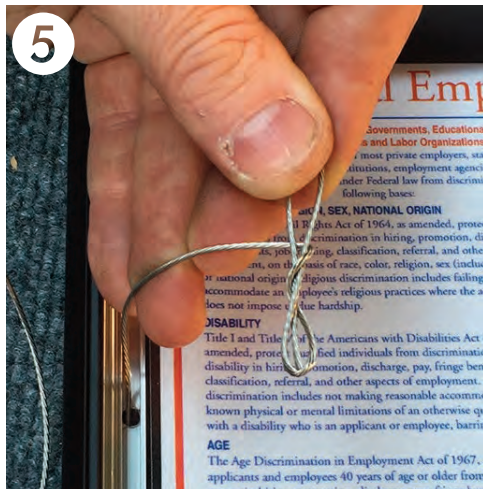
2 Open the left and right sides of the frame, and locate the frame's pre-drilled holes.



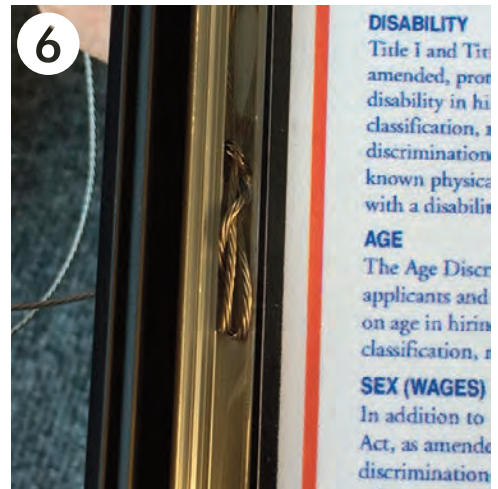
3 Beginning with the left side, feed the wire through the frame's hole.



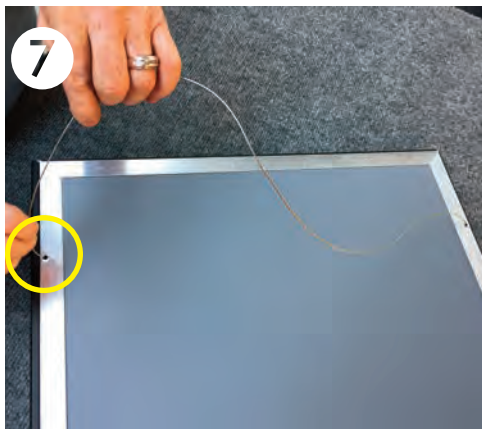
4 Feed approximately 6" through the hole, then make a loop back on itself.



5 Twist the wire into another loop, creating a T shape.



6 Pull the wire from the back so the T shape is flush with the frame.



7 Feed the rest of the wire to the other side of the frame and pull the wire through the frame's hole, back to front.



8 With the rest of the wire repeat steps 4 to 6 to right side of the frame. Snap the frame close on both sides.



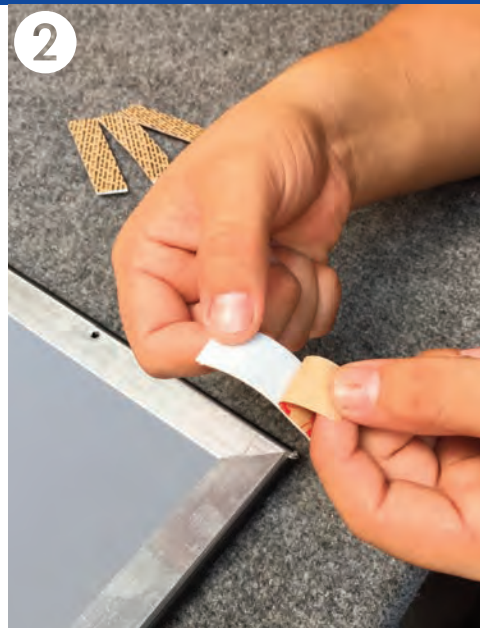
9 Your frame is ready to hang from a single wall-mounted screw.



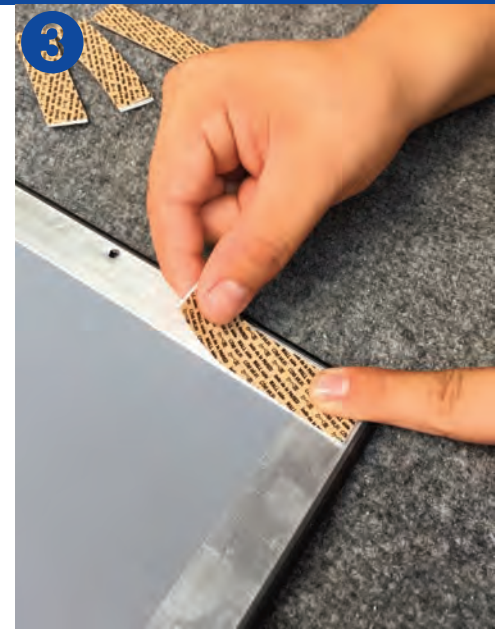
# SNAP FRAME INSTRUCTIONS OPTION C



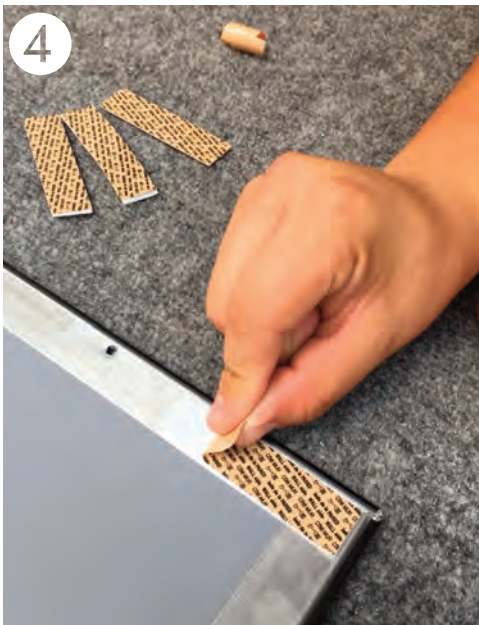
1  
Locate the 4 double sided adhesive strip stickers.



2  
One at a time, take one of the stickers and peel off the backing.



3  
Hold one side of the sticker down to the frame as you press the rest to it.



4  
Peel back the second backing to the sticker.  
Repeat this process for the rest of the stickers for all four corners of the frame.



5  
Your frame should look like this when done.



6  
Press the frame to the door or surface of a wall.



If you have any questions or concerns, please call this number:

**1-800-817-7678**